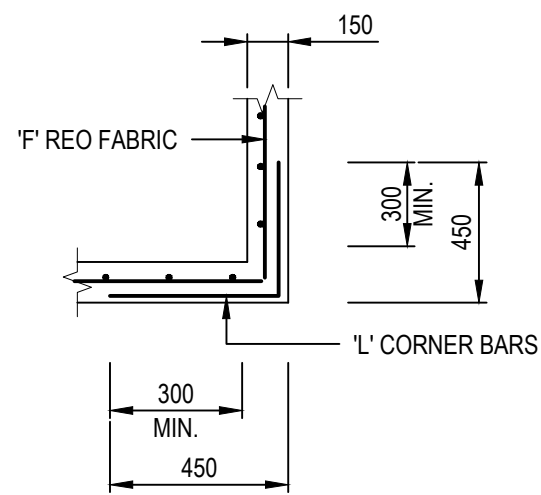
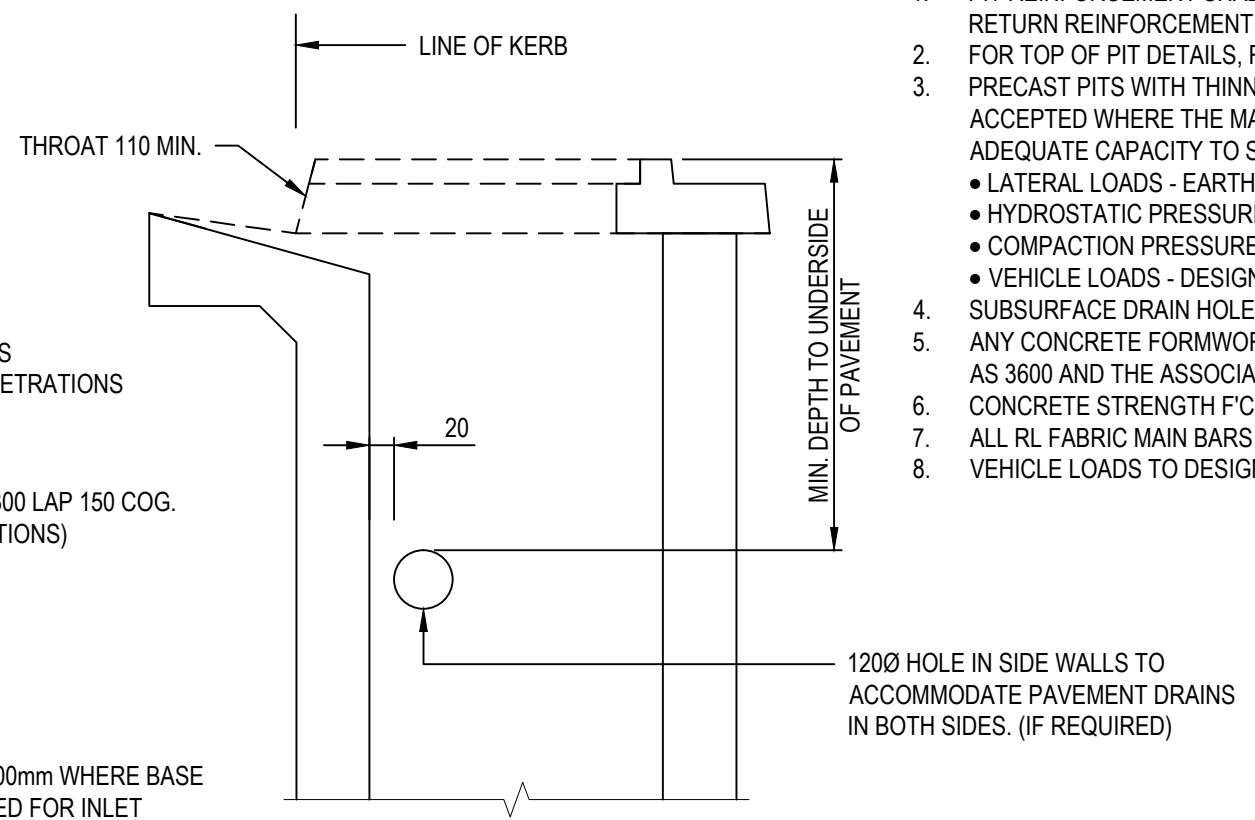


TYPICAL PIT DETAIL



150mm CORNER DETAIL



PRECAST PIT

NOTES:

- PIT REINFORCEMENT SHALL HAVE 300mm MIN. LAPS. CLEAR COVER TO BE 50mm MIN. CORNER RETURN REINFORCEMENT MAY BE FABRIC OR EQUIVALENT BARS.
- FOR TOP OF PIT DETAILS, REFER TO RELEVANT STANDARD DRAWINGS.
- PRECAST PITS WITH THINNER WALLS AND LESS STEEL OR FIBRE REINFORCED PITS MAY BE ACCEPTED WHERE THE MANUFACTURER CAN DEMONSTRATE THAT THE PITS HAVE ADEQUATE CAPACITY TO SUPPORT A COMBINATION OF THE FOLLOWING LOADS:
 - LATERAL LOADS - EARTH PRESSURE WITH APPROPRIATE SURCHARGE LIVE LOAD CLASS
 - HYDROSTATIC PRESSURE
 - COMPACTION PRESSURE (25kPa MIN.)
 - VEHICLE LOADS - DESIGN VEHICLE LOAD
- SUBSURFACE DRAIN HOLES TO BE SEALED IF NOT USED.
- ANY CONCRETE FORMWORK, REINFORCEMENT, POURING AND CURING SHALL COMPLY WITH AS 3600 AND THE ASSOCIATED CODES.
- CONCRETE STRENGTH F'C - 32 MPa. (MIN.) AT 28 DAYS. SLUMP TO BE 80mm.
- ALL RL FABRIC MAIN BARS SHOULD BE PLACED HORIZONTALLY.
- VEHICLE LOADS TO DESIGN LOAD CLASS

| REINFORCEMENT DETAILS | | | | | |
|-----------------------|--------------------|----------------------------|---------------------|-------------------|-----------------------------------|
| LOAD CLASS | MAX WIDTH (W) (mm) | 'F' FABRIC | 'H' HORIZONTAL BARS | 'V' VERTICAL BARS | 'L' CORNER BARS |
| B | 600 | SL82 (c) | 2/N10 | 1/N10 | N10 @ 300 (c) |
| B | 900 | SL82 (c) | 2/N10 | 1/N10 | N10 @ 300 (c) |
| B | 1200 | SL92 (c) | 2/N12 | 1/N12 | N10 @ 200 (c) |
| B | 1500 | SL92 (50 INTERNAL COVER) | 2/N12 | 1/N16 | N10 @ 200 (c) (50 INTERNAL COVER) |
| B | 1800 | SL92 (50 INTERNAL COVER) | 2/N16 | 1/N16 | N12 @ 200 (c) (50 INTERNAL COVER) |
| D | 600 | SL82 (c) | 2/N10 | 1/N10 | N10 @ 300 (c) |
| D | 900 | SL92 (50 INTERNAL COVER) | 2/N10 | 1/N10 | N10 @ 200 (c) (50 INTERNAL COVER) |
| D | 1200 | RL818 (50 INTERNAL COVER) | 2/N12 | 1/N12 | N12 @ 200 (c) (50 INTERNAL COVER) |
| D | 1500 | RL118 (50 INTERNAL COVER) | 2/N12 | 1/N16 | N12 @ 200 (c) (50 INTERNAL COVER) |
| D | 1800 | RL1218 (50 INTERNAL COVER) | 2/N16 | 1/N16 | N12 @ 200 (c) (50 INTERNAL COVER) |

NOTE:

- PROVIDE REINFORCEMENT AS PER TABLE FOR WALL WITH CORRESPONDING WIDTH (W).
- IF ADJACENT WALLS HAVE DIFFERENT WIDTHS, ADOPT 'L' CORNER BARS CORRESPONDING TO HIGHER WIDTH.

ALL MEASUREMENTS IN MILLIMETRES

| REV | DESCRIPTION | DATE | DES | DRW | APP |
|-----|-------------------|------------|-----|-----|-----|
| D | MINOR AMENDMENTS | 06.11.2018 | AF | AF | MDH |
| C | MINOR AMENDMENTS | 18.07.2017 | JZ | JC | DSL |
| B | ISSUED FOR REVIEW | 10.05.2016 | JZ | DL | DSL |
| A | ISSUED FOR REVIEW | 15.03.2016 | RJF | DL | DSL |

| | |
|--------------------------------------|----------|
| INFRASTRUCTURE GUIDELINES (SA) | |
| SHEET TITLE | |
| STORMWATER PITS REINFORCEMENT | |
| DETAILS | |
| SCALE | REV |
| NTS @ A3 | |
| DRAWING No. | |
| SD 300 | D |

THIS PROJECT HAS BEEN ASSISTED BY THE LOCAL GOVERNMENT RESEARCH AND DEVELOPMENT SCHEME AND INSTITUTE OF PUBLIC WORKS ENGINEERING AUSTRALASIA